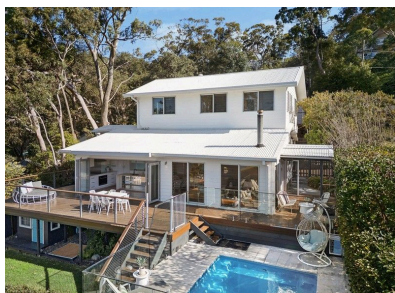


RELEVANT SALES



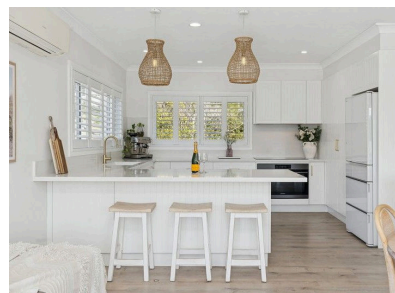
28 Kunala Lane,
Horsfield Bay

5 Bed 2 Bath 2 Car
Land size 561.1m²
Sold on 15 December 2025
\$1,515,000



1A Central Avenue,
Phegans Bay

5 Bed 2 Bath 1 Car
Land size 375.6m²
Sold on 19 October 2025
\$1,490,000



61 Taylor Street,
Woy Woy Bay

5 Bed 3 Bath 1 Car
Land size 534.2m²
Sold on 24 September 2025
\$1,800,000